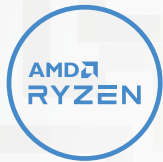


# LEGION 5 Pro (16")

## PRO-LEVEL PERFORMANCE.

Engineered to deliver devastation in and out of the arena, the Lenovo™ Legion 5 Pro features the latest generation AMD Ryzen™ processor and NVIDIA® GeForce RTX™ dishing out high-resolution gaming at optimal-frame-rates with the Legion AI Engine and optimally cooled via the Legion Coldfront 3.0 thermal system. The world's first 16" QHD gaming laptop with up to 165 Hz refresh rate sets up a killer "winning zone" that towers over your enemies' sight-lines, giving you an extra edge in screen real estate by upping your peripheral vision. Combined with Nahimic 3D audio that pinpoints their footsteps in space, you'll be able to see and hear any scrub headed your way before they even hit firing range. Enjoy elite gaming experiences on the Legion 5 Pro, available in Storm Grey or Stingray White.

### WHY YOU SHOULD BUY THE LENOVO LEGION 5 PRO (16")



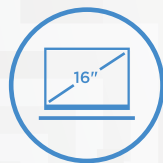
#### Escalate your game

Blast past serious esports challengers with up to 8 high-performance cores in the AMD Ryzen™ 7 5800H mobile processor, delivering a combination of lightning-fast frame rates with uncompromised battery life.



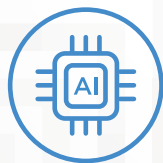
#### RTX. It's On.

NVIDIA® GeForce RTX™ 30 Series graphics bring 2<sup>nd</sup> Generation Ray Tracing, 3<sup>rd</sup> Generation AI Tensor Cores and more for a huge leap in graphical performance.



#### Serious frame advantage

Dominate the competition with maximum screen real estate. Enjoy WQXGA resolution, 165 Hz refresh rate, a 16:10 aspect ratio with best-in-class color accuracy and high dynamic range.



#### Boost framerates with the Lenovo Legion AI Engine

Exclusive to Lenovo Legion laptops, the Lenovo Legion AI Engine, a system of AI solutions, dynamically shifts power between the CPU and GPU for more FPS on today's top AAA titles.



[WWW.LENOVO.COM](http://WWW.LENOVO.COM)



Lenovo™

# LEGION 5 Pro (16")

## SPECIFICATIONS

Lenovo Legion 5 Pro 16ACH6H, Lenovo Legion 5 Pro 16ACH6, \*

### PERFORMANCE

#### Mobile Processor

Up to AMD Ryzen™ 7 5800H

#### Operating System

Windows 10 Pro  
Windows 10 Home

#### Graphics

**NVIDIA® GeForce RTX™ 3070 Laptop GPU**  
**8 GB GDDR6**

Listed Boost Clock 1560 MHz, Achieved  
Boost Clock 1620 MHz, Maximum Graphics  
Power 140W<sup>1</sup>

**NVIDIA® GeForce RTX™ 3060 Laptop GPU**  
**6 GB GDDR6**

Listed Boost Clock 1425 MHz, Achieved  
Boost Clock 1702 MHz, Maximum Graphics  
Power 130W<sup>1</sup>

**NVIDIA® GeForce RTX™ 3050 Ti Laptop GPU**  
**4 GB GDDR6**

Listed Boost Clock 1485 MHz, Achieved  
Boost Clock 1695 MHz, Maximum Graphics  
Power 95W<sup>1</sup>

**NVIDIA® GeForce RTX™ 3050 Laptop GPU**  
**4 GB GDDR6**

Listed Boost Clock 1500 MHz, Achieved  
Boost Clock 1740 MHz, Maximum Graphics  
Power 95W<sup>1</sup>

#### Memory

**3200 MHz DDR4** : Up to 32 GB

#### Storage

**M.2 NVMe PCIe SSD** : Up to 2 TB

#### Battery<sup>2</sup>

Up to 8.1 Hours (Target)<sup>3</sup>  
Rapid Charge Pro

#### Power Adapter

Starting at 230W Slim Adapter

### DESIGN

#### Display

16" WQXGA (2560 x 1600) IPS; 16:10 (165 Hz /  
3 ms Response Time<sup>4</sup> / 100% sRGB / 500 nits /  
Up to VESA DisplayHDR™ 400 Certified /  
Dolby Vision® Support / NVIDIA® G-SYNC™ /  
AMD FreeSync™ Premium<sup>5</sup> / Low Blue Light -  
TUV Certification)

#### Dimensions (W x D x H) (Target)<sup>6</sup>

(mm) : 356 x 260.4-264.2 x 21.7-26.85  
(inches): 14.01" x 10.25-10.41" x 0.85"-1.07"

#### Weight (Target)<sup>6</sup>

Starting at 2.45 kg (5.4 lbs)

#### Backlit Keyboard

White Backlight  
Blue Backlight<sup>7</sup>  
4-Zone RGB Backlight<sup>8</sup>

#### Colors

Storm Grey  
Stingray White<sup>9</sup>



### CONNECTIVITY

#### Webcam

Built-in HD Webcam (720p) with E-Shutter

#### WLAN

2x2 WiFi 802.11 ax

#### Bluetooth®

Bluetooth® 5.1

#### Audio

2 x 2W Stereo Speakers

#### I/O (Input/Output) Ports

##### Left Side

1 x USB Type-C™ (USB 3.2<sup>9</sup> Gen 2,  
DisplayPort™ 1.4)  
1 x Audio Jack

##### Right Side

1 x USB 3.2<sup>9</sup> Gen 1  
1 x E-Shutter Button

##### Rear

3 x USB Type-A 3.2<sup>9</sup> Gen 1 (1 x Always-On 5V)  
1 x USB Type-C™ (USB 3.2<sup>9</sup> Gen 2,  
DisplayPort™ 1.4, Power Delivery)  
1 x HDMI™ 2.1  
1 x RJ45 Ethernet  
1 x DC-In

### PRELOADED SOFTWARE

- Lenovo Vantage
- Lenovo PC Manager
- McAfee LiveSafe™
- Lenovo Antivirus
- Microsoft Office Trial<sup>10</sup>
- Power2Go

<sup>1</sup> Supports NVIDIA® Max-Q Technologies: Advanced Optimus, Resizable BAR, Dynamic Boost 2.0.

<sup>2</sup> All battery life claims are approximate and based on results using the MobileMark® 2018 v1.0.2.46 battery life benchmark test. Actual battery life will vary and depends on many factors such as product configuration and usage, software use, wireless functionality, power management settings, and screen brightness. The maximum capacity of the battery will decrease with time and use.

<sup>3</sup> Final battery life to be finalized Spring 2021 or Product SS 2021. Testing conducted by Lenovo. AMD has not independently tested or verified this battery life claim.

<sup>4</sup> With Overdrive (OD).

<sup>5</sup> AMD FreeSync™ technology is supported on the built-in laptop panel, which is enabled by the AMD Ryzen™ processor and the AMD Radeon™ driver. Driver update may be required.

<sup>6</sup> Final product spec info available Spring 2021.

<sup>7</sup> Available only on Stingray White version.

<sup>8</sup> Optional.

<sup>9</sup> The actual transfer speed of the USB 3.2 will vary and, depending on many factors, such as the processing capability of host and peripheral devices, file attributes and other factors related to system configuration and your operating environments, will be slower than a speed of 20 Gbit/s.

<sup>10</sup> Except Japan, India and China.

## LENOVO SERVICES

#### Warranty Upgrades - On-site / In-Home Service

Maximizes PC uptime and productivity by providing convenient, fast repair services in your own home.

#### Accidental Damage Protection

Avoid the hassles of unexpected repair costs. Provides coverage for non-warranted damage incurred under normal operating conditions, such as minor spills, drops or damage to the integrated screen.

\* Example of Lenovo catalogue naming convention



#### Warranty Extensions

##### (1-to-3 Years Total Duration)

This fixed-term, fixed-cost service helps accurately budget for PC expenses, protect your valuable investment and potentially lower the cost of ownership over time.

## OPTIONS & ACCESSORIES



Lenovo Legion  
M300 RGB  
Gaming Mouse



Lenovo Legion  
H300  
Stereo Gaming  
Headset



Lenovo Legion  
15.6" Recon Gaming  
Backpack



WWW.LENOVO.COM

Lenovo reserves the right to alter product offerings and specifications at any time, without notice. Lenovo makes every effort to ensure accuracy of all information but is not liable or responsible for any editorial, photographic or typographic errors. All images are for illustration purposes only. For full Lenovo product, service and warranty specifications visit [www.lenovo.com](http://www.lenovo.com). Lenovo makes no representations or warranties regarding third party products or services. ©2021 Advanced Micro Devices, Inc. All rights reserved. AMD, the AMD Arrow logo, Radeon, FreeSync and combinations thereof, are trademarks of Advanced Micro Devices, Inc. Microsoft and Windows are registered trademarks of Microsoft Corporation in the United States and/or other countries. 3DMark is a registered trademark of Futuremark Corporation. Other names are for informational purposes only and may be trademarks of their respective owners. Other company, product and service names may be trademarks or service marks of others. Visit [www.lenovo.com/lenovo/us/en/safecomp/](http://www.lenovo.com/lenovo/us/en/safecomp/) periodically for the latest information on safe and effective computing. ©2021 Lenovo. All rights reserved.



Lenovo™